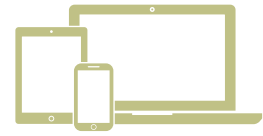


# SUGARFISH TAKEOUT MENU



To provide the best takeout sushi,  
we do not sauce the fish.  
We package the sauces for you  
and provide instructions to  
let you know what sauce  
goes with each fish. ENJOY!

Visit [www.sugarfishsushi.com/eat](http://www.sugarfishsushi.com/eat)  
for additional instructions.



Order can be placed using  
ChowNow Sugarfish Mobile App or  
from the menu page of our website  
[www.sugarfishsushi.com/2go](http://www.sugarfishsushi.com/2go)



## To-Go TRUST ME

Organic Edamame  
Tuna Sashimi  
Albacore Sushi (2-pc)  
Salmon Sushi (2-pc)  
Yellowtail Sushi (2-pc)  
Snapper\* Sushi (2-pc)  
Toro Cut Roll (4-pc)  
Blue Crab Cut Roll (4-pc)

\$33.00



## To-Go LITE

Organic Edamame  
Tuna Sashimi  
Albacore Sushi (1-pc)  
Salmon Sushi (1-pc)  
Yellowtail Sushi (1-pc)  
Nozawa-style Shrimp Sushi (1-pc)  
Toro Cut Roll (4-pc)  
Blue Crab Cut Roll (4-pc)

\$25.00

## TO-GO

## NOZAWA TRUST ME

Organic Edamame  
Tuna Sashimi  
Albacore Sushi (2-pc)  
Salmon Sushi (2-pc)  
Yellowtail Sushi (2-pc)  
Snapper\* Sushi (2-pc)  
"Daily Special" (2-pc)  
Toro Cut Roll (4-pc)  
Blue Crab Cut Roll (4-pc)

\$38.00

*Trust Me's are our most popular menu items, but a la carte orders are also welcome.*

## Specials when available

Albacore Belly Sushi	\$6.00
Engawa Sushi	\$6.25
Toro Sushi	\$8-\$14

*There may be small daily variations to  
the Trust Me's and the Nozawa*

Eating raw or undercooked foods may increase  
the risk of food borne illness. Also please note  
that while infrequent, there could be pieces of shell  
or bone in our fish and shellfish.

**All items are subject to availability.**

**We are a NO TIPPING restaurant.  
Hospitality is included in or menu prices.**

### Sashimi + Edamame

Organic Edamame	\$2.50
Salmon Sashimi	\$7.50
Tuna Sashimi	\$8.00
Hirame** Sashimi	\$9.00

### Sushi (2 pieces per order)

Nozawa-style Shrimp	\$5.00
Unagi	\$5.25
Albacore	\$5.50
Salmon	\$5.50
Tuna	\$5.50
Snapper*	\$5.75
Large Scallops	\$5.75
Sea Bass	\$6.00
Hirame**	\$6.00
Yellowtail	\$6.00
Sweet Shrimp	\$7.50

### Cut Rolls (8 pieces per order)

Cucumber	\$7.75
Salmon	\$8.50
Bay Scallops	\$8.50
Blue Crab	\$9.00
Toro "Fatty Tuna"	\$9.50
Yellowtail	\$9.50
Lobster	\$14.00
Split Cut Roll (4-pc. each, no Lobster)	\$9.50
Split Cut Roll with Lobster	\$12.50

### Tea + Soda

Iced Green Tea	\$2.50
Coke, Diet Coke, Sprite	\$2.50

[www.SUGARFISHsushi.com](http://www.SUGARFISHsushi.com)

Hours of Operations:  
Mon-Sat 11:30 am - 10:00 pm  
Sun 12:00 pm - 9:00 pm

© 2008-2017 All Rights Reserved. Sushi Nozawa Group

Please let us know about any food allergies.

\* Our snapper is NZ Snapper from New Zealand

\*\* Our Hirame is Fluke from the US North Atlantic coast,  
which in LA is commonly called Halibut